

- Please check out our website at www.askspeechie.com.au

INSIDE
THIS
ISSUE:

Welcome 1

Topic 1: How I can I tell if my child needs speech therapy? 1

Topic 1: How can I tell if my child needs speech therapy? 2

Literacy— Reading and Writing 2

Literacy— Reading and Writing 3

Our website 3

Contact details 4

Literacy 4

Welcome

Welcome to the April newsletter from Ask a Speechie, Well the year is certainly flying, we hope you all had a wonderful Easter break and are enjoying the school holidays.

At the Ask a Speechie clinic things are moving along well as well.

New resources will be available for sale in the next week or two. We already have the story books, and the games will now be available .

The boards games are aimed at kindergarten to year one (for revision). There is a focus on language (including groups and sub-groups, same and different, things that got together, what things do, where they live and what they look like. Pre-literacy skills are also targeted in terms of syllables, rhyming, initial and

final sounds, segmenting and blending sounds in words.

Each board game is based on a different theme from animals, to transport to clothes. Just to name a few. Visit our website for more information.

The workbooks are still being developed but shouldn't be too far away.

To reiterate from previous newsletters, at Ask A Speechie we specialize in working with children between the ages of 3 and 12 with language, comprehension, articulation and literacy difficulties.

We welcome all feedback and hope to hear from you all soon.

Until next time...

Natalie Jones

Principal Speech Pathologist

Please Note: The offices of Ask A Speechie will be closed from 26 April 2010 to 1 June 2010 as Natalie is getting married and will be on her honeymoon. The phones will continue to be monitored and you are able to book in assessments for after June 1. All questions and sales will also be dealt with.



Topic 1: How Can I Tell if my Child needs Speech Therapy?

It is sometimes difficult to know if your child needs speech therapy intervention or not. Many teachers, day care centre workers and child care nurses are trained to advise a parent whether or not their child is developing along a normal range.

However not everyone has

access to these specialised people.

Speech Pathologists work in a number of language and literacy related areas. If your child is having difficulty in any of these areas then

visiting a speech pathologist is recommended.

These areas include:-

Comprehension: If your child has difficulty following instructions at home or school; has difficulty following conversations or asking and/or answering questions.



Topic 1: How Can I Tell if my Child needs Speech Therapy?

Spoken Language: If your child uses only a few words, uses shorter sentences than his/her peers, uses incorrect grammar, has difficulty finding the right word or thinking of the word they want to use or has difficulty telling or retelling a story or something they have done.

Attention: If your child has difficulty focusing and being attentive for periods of time (particularly school-aged children).

Pre-literacy skills (such as segmenting, rhyming, knowing the first sound in a word): If your child's skills fall behind those of his/her peers.

Literacy skills: If your child's spelling, reading or writing skills falls behind those of his/her peers.

Speech: If your child is difficult to understand or is making sound errors.

Social Language and Play skills: If your child has difficulty communicating or playing

with adults or their peers or they have poor imaginative play skills.

Stuttering: If your child is stuttering or not speaking fluently with lots of umms and ahhs.

Voice: If your child's normal speaking voice is nasal, hoarse or husky. All these area are signs that your child may need a Speech Pathologist. If your child has more than one area of concern, then we definitely recommend that you contact a Speech

Effective communication and language skills are fundamental to young people's learning, developing social skills and fulfilling their potential."

Ed Balls



Topic 1: How Can I Tell if my Child needs Speech Therapy?

Pathologist
Should you have any concerns or wish to ask any questions about your child's development please contact our website on www.askspeechie.com.au or phone us on 9438 1969. There are some information brochures under the parents section of the website that may give you some ideas and some strategies to try as

well. However these are not treatments and if you have any concerns please contact a speech pathologist. Ask a Speechie Speech Pathologists are happy to provide a free 15 minute initial phone consultation to answer any questions or concerns you may have. In some cases we will be able to answer your questions easily, in others we will

recommend an assessment consultation.

Literacy – Reading and Writing

Research shows us that oral language is linked to literacy. Therefore, it is quite common for children who have literacy difficulties to also have language difficulties and vice versa.

Oral language includes the ability to tell or retell a story, explain an event or

talk about something your child has made or done. It makes sense that if a child has difficulty telling a story they will have difficulty writing the story. This is due to the fact that they are expected to think of what they want to say (language related), think of

the words they want to use (language related), put the words in the correct order (sentence structure), write the words (remembering both how to spell the words and formulate the letters) and then finally remember to add punctuation such as

Literacy – Reading and Writing

commas, capital letters and full stops (grammar). This is a lot of work for a child who is already struggling with language. Speech pathologists provide resources to break down these skills so that children having difficulty with language and/or literacy are able to develop stories and story writing in a structured and ultimately less stressful way.

Literacy also involves reading. Once again this is also a complex process. Children

who are first learning to read tend to need to be able to break down words into their individual sounds and then put them back together (for example “red” = “r-e-d which makes “red”), remember words that are not easily sounded out such as “the” or words that are expected to be remembered as whole words, such as sight words. They also need to retain what they read in their memory and then understand it in order to make sense of what they are

reading. Many children with reading difficulties need time to read sentences.

Unfortunately, quite often at the end of getting through a sentence they have forgotten what the first words were and hence the meaning of the sentence is lost.

Speech pathologists are able to break down these skills and enable children to learn to read at a rate and level that suits the individual child.



“Communication is at the heart of child development, be it social, cognitive, emotional or behavioural.” L.S

Vygotsky

Our website

If you are not yet familiar with our website we invite you to have a look around.

We are always interested in your opinions and constructive feedback.

Our parents’ section gives you information on different areas of speech pathology.

Please feel free to print out this information and use it with your

child. Please note this is a strategy to help your child and NOT a complete treatment for your child. It is important to contact a speech pathologist if you have any concerns.

You will notice we have a question section. All questions are answered within 24 to 48 hours. We encourage our parents to ask questions (hence our name!!). We are happy to offer free advice.

Sometimes we may not be able to give you a complete answer as some questions depend on family history, your child’s history and medical information. We will endeavour to answer all questions to the best of our ability.

Our online games are taking longer than expected to be completed and we apologise for this delay. We will keep you updated on the progress.

Our website cont..

Please note: A monthly fee will be payable for you and your child to access these games once they are completed.

In the meantime download information for free, ask us any questions you like.

We look forward to speaking with you soon.

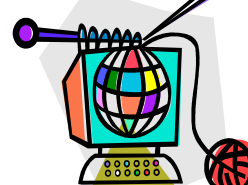
Website:

www.askaspeechie.com.au

E-mail:

mail@askaspeechie.com.au

Phone: 9438 1969





Ask A Speechie

3/3 Coolgardie Avenue
East Fremantle WA 6158

Phone: (08) 9438 1969
International Phone: +61 8 94381969
E-mail: mail@askaspeechie.com.au
Website: www.askaspeechie.com.au

Ask a Speechie is a speech pathology clinic established January 2010. We work with children from 3 years of age to end of primary school in areas such as language, literacy, articulation, comprehension, pre-literacy skills and story telling.

We offer treatment and assessment to suit your child's needs. Please contact us for more details.



Literacy – Reading and Writing

For more information on oral language, literacy or any other speech pathology issues, please do not hesitate to contact us at Ask a Speechie on 9438 1969, e-mail: mail@askaspeechie.com.au or go to our website at www.askaspeechie.com.au.

